



# THE ROTARY CLUB OF WAITAKERE CITY

MAKING A DIFFERENCE IN OUR WORLD

BULLETIN 11<sup>TH</sup> AUGUST 2010  
VOLUME 41 ISSUE 6

**Venue:** Rex Davy Lounge, Lower Ground Floor, The Trusts Stadium, Central Park Drive, Henderson  
**Time:** 5:45pm for 6:10pm  
[www.rotarywaitakere.org.nz](http://www.rotarywaitakere.org.nz)



## 14<sup>TH</sup> AUGUST 10

Press Photo Exhibition  
5:30 to 7pm  
Smith & Caughey Building  
(Info in bulletin)

## 18<sup>TH</sup> AUGUST 10

Community Mapping Workshop – all members to participate.  
Facilitator: Martin Anscombe.

## 25<sup>TH</sup> AUGUST 10

Mid Winter Christmas Party

## 28<sup>TH</sup> AUGUST 10

West Harbour Book Fair

## 1<sup>ST</sup> SEPT 10

DG Visit

## 3RD SEPT 10

Sunderland School Trivial Pursuit

## 8<sup>TH</sup> SEPT 10

David Thornton – Super City and Local Boards

## MONDAY

## 13<sup>TH</sup> SEPT 10

Joint meeting at West Harbour Rotary to hear Barry de Geust

## 15<sup>TH</sup> SEPT 10

NO MEETING (due to joint meeting)

## 22<sup>ND</sup> SEPT 10

### FUTURE EVENTS

#### NEXT WEEK – WED 18<sup>TH</sup> AUGUST 2010

Martin Anscombe will be running a Community Mapping Workshop (details below).

#### MID WINTER CHRISTMAS – WED 25<sup>TH</sup> AUGUST 2010

**What:** A Mid-Winter Christmas Dinner

**Date:** 25<sup>th</sup> August 2010

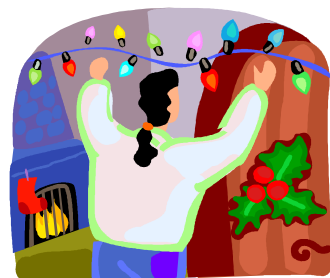
**Time:** 6:30pm for 7:00pm

**Venue:** Rex Davy Lounge

**Cost:** \$25 per person plus gold coin donation to Santa

**Menu:** Ham, turkey and all the trimmings

**Who:** Partners, past members, future members, friends, family, other Clubs...



There are a few ideas floating around – best Christmas Hat competition is one. If you have other suggestions – see Domenic.

(Yeah, yeah, we know. August is probably more like early spring rather than mid winter – but we are running on Waitakere Time here and it should be fun.)

### CURRENT EVENTS



#### DI JENNINGS

**Di Jennings - Contractor for Community Economic Development and Project Twin Streams Future Governance**

Di came to Rotary to give us an insight into Community Development projects both here in West Auckland and also elsewhere in the world.

Di spent a year in Scotland learning about the projects that are in operation over there and assessing their value to New Zealand

communities.

Her talk ranged from activities that are happening in the Ranui Action Project and elsewhere in West Auckland to a windmill in Scotland that both provides power for an island and generates income for the community by returning the surplus to the national grid.

Dick Berry – AA  
Driving Defensively on  
Behalf of ACC

West Harbour Rotary  
to join us

6<sup>TH</sup> TO 7<sup>TH</sup> NOV

Kumeu Art in the  
Garden

Social Enterprise activities are ones designed to benefit the community. These can include a range of enterprises from Opportunity Shops to the Whale Watch Project in Kaikoura.

An interesting insight into what others are doing.

## MEMBERS' NEWS

### LUCY RIDDELL



On Saturday 7<sup>th</sup> August 2010 Lucy passed away after her battle with Motor Neuron Disease. Lucy's funeral was held on Tuesday 10<sup>th</sup> August and around 1,000 people turned up to mourn the passing of this very special lady.

Jack, Lucy's husband, first became a member of the Avondale Rotary Club around 40 years ago before moving to Waitakere City Rotary in 1982. Lucy, whilst pursuing her own interests, has always been an active supporter of both Jack and our Club and will be sorely missed.

Lucy was actively involved in her community as past president of: Te Atatu Floral and Garden Circle, Te Atatu Women's Bowling Club, Henderson Ladies Probus Club, Auckland Bulb and Perennial Society Inc and committed member of West Auckland U3A, Rotary Club of Waitakere City and the 24th Infantry Battalion Association.

The family have requested that in lieu of flowers donations can be made to any of the following:

- West Auckland Hospice, PO Box 45181, Te Atatu Peninsula,
- Neurological Foundation, PO Box 110022, Auckland Hospital, Auckland 1148,
- Motor Neuron Disease Association Auckland, PO Box 16238, Sandringham, Auckland.

The Waitakere City Rotary Club will be sending a cheque for \$500 to the Motor Neuron Disease Association in Lucy's name.

### JACK RIDDELL



Jack will be celebrating his 90<sup>th</sup> birthday next Wednesday. He seems to think dining with family will be more satisfying than coming to Rotary for this occasion <sob>. This will be remembered Jack!

(And Jack, make sure there is a fire extinguisher handy when you light the candles on the cake)

## COMMUNITY NEWS

### TRIVIAL PURSUIT

**Who:** Sunderland School

**When:** Friday 3<sup>rd</sup> September

**Time:** 7pm

**Cost:** \$20/head

Craiger is planning a Rotary Trivial Pursuit evening at some point in the future. Attending the Sunderland School one is an opportunity to find out what it is all about. Rotary team anyone? For more details contact Bob

### DON OLIVER SPORTS FOUNDATION DINNER

**When:** Thursday 19<sup>th</sup> August (next week)

**Where:** The Trusts Stadium

**Cost:** \$135 per person

**Details:** In 28<sup>th</sup> July Bulletin

If interested please contact Patrick urgently so he can book tickets

## CLUB NEWS

### COMMUNITY MAPPING WORKSHOP

#### **Waitakere City Rotary Club's "Building Communities Programme 2010"**

Well, we've had the speakers – the next part of the Building Communities Programme is giving all members a chance to share their ideas, to:

- Create a Waitakere 'community map' that shows places that club members think are important for communities.

This could help us see areas that might benefit from future club projects.

The community mapping workshop will work in two teams, with a challenge for one team to come up with a list of the most community resources – and the location! There will be a prize for the team that comes up with the most community resources. Nibbles will be on tables to help teams think!

The community resources can be:

#### **LOCAL INSTITUTIONS & RESOURCES**

Local Businesses

Hospital

Schools

Local Facilities

Government & Council

#### **COMMUNITY ASSOCIATIONS**

Service Clubs

Neighbourhood House

Community Organisations

Sporting Teams

Churches

#### **INDIVIDUALS**

Young People

All Residents

Senior Citizens

Artists

Community Stories



## BOARD NEWS

### THE ROTARY NATIONAL SUMMER SCIENCE AND TECHNOLOGY FORUM

**What:** The Summer Science School is a residential program at Auckland University for top achieving Year 12 (Form 6) students who intend to return to school next year for Year 13 and wish to make Science their career choice.

150 students from all around New Zealand attend this Forum and get an extremely good introduction to a number of fields of Science, what qualifications are on offer and a glimpse of what University is like.

Places are limited and highly sort after.

**When:** 15<sup>th</sup> to 29<sup>th</sup> January 2011

**Cost:** \$1,350 per student (our Club can help a little but the student pays the bulk of this fee)

**Applications close:** 27<sup>th</sup> August 2010

**Applications:** An application pack is available from [rotarywaitak@rotarywaitakere.org.nz](mailto:rotarywaitak@rotarywaitakere.org.nz) Any enquiries will then be forwarded to our Youth Director Patrick.

### JOHN RITCHIE SCHOLARSHIP FUND

Currently we have two events named after past members of our Club:

- The Don Page Memorial Golf Tournament
- The Alistair Morton Scholarship - \$1,000 award to a leaving student of Rutherford High School

We could name the Soapbox Derby after JR (but can visualize him sitting on a cloud shaking his head and saying "No, no... Naming Rights should be kept for Sponsors!") As an alternative it has been suggested that we create a new scholarship for a student at a school of Rachel's choice.

The Alistair Morton scholarship is paid from interest on a term investment. Any new scholarship would need to be paid annually from Club Funds. It has therefore been suggested that the annually awarded scholarship should be for \$500.

Rachel has been contacted, is keen on the idea, and will talk to her family as to which school this should go to.

### DICTIONARIES

Patrick has a small supply of dictionaries remaining from last year. He is presenting these to Holy Cross School at assembly today (Friday 13<sup>th</sup> August) at 10am.

## DISTRICT NEWS



### PRESS PHOTOGRAPHERS' EXHIBITION

#### INVITATION TO THE OPENING OF A NEW MAJOR PROJECT BY THE ROTARY CLUB OF AUCKLAND

The Rotary Club of Auckland invites Rotarians and partners in Districts 9920 and 9910 to participate in a celebratory opening of: THE WORLD PRESS PHOTO 10 EXHIBITION

Press Photographers throughout the world participate annually in the World Press Photo Contest based in Amsterdam. The contest is regarded as the most prestigious award for photojournalism in the world. The prize-winning photographs are assembled into a travelling exhibition that is seen by over two million people in some 45 countries worldwide.

The Rotary Club of Auckland has secured the rights to bring the exhibition to Auckland for the first time with the vision that it will become a destination date on the annual calendar. The Exhibition will run for 3 weeks.

We are holding an invitation only function for Rotarians on Saturday the 14th August at 5.30pm – 7.30pm - Level 6, Smith and Caughey Building, Queen Street. Drinks and nibbles will be provided. Tickets are \$35.00 single or \$50.00 double - Book your tickets by emailing Secretary Jacqui Bernards – [office@rotary.co.nz](mailto:office@rotary.co.nz) - Places strictly limited.

Don Bendall  
President 2010/2011

### **EMPLOYMENT OPPORTUNITY – CAN YOU HELP?**

President Stephane Courte of the Rotary Club of Noumea Ouen Toro has been approached by a local business school student seeking a period of work experience in a New Zealand company.

Pryska Diman is an 18-year old student in her first year of a 2-year business studies course at the Lycée Lapérouse, Nouméa. She is studying to become an Executive Assistant.

As part of her study she has to undertake an unpaid training period (work experience) abroad for 7 weeks from 1st November to 17th December 2010. There is no requirement for a specific service or industry sector.

Pryska will organize her own flights and accommodation, however if there is anyone who is prepared to host her for this period that would be very helpful. Immigration/visa requirements are managed by the local administration in Nouméa. If anyone thinks they may be able to help and would like more information please contact Elaine Mead (Rotary Club of Westhaven) at [miselaineous@xtra.co.nz](mailto:miselaineous@xtra.co.nz)

### **KUMEU ART IN THE GARDEN FOR ROTARY**

6-7 November 2010, 10am – 5 .00pm daily.

This event is held within four of Kumeu's most outstanding gardens. There will be food and beverages options, music- jazz string and country and over 1000 art-works for sale, advertised as perfect for Christmas gifts.

Tickets are available online at [www.kumeuartinthegarden.co.nz](http://www.kumeuartinthegarden.co.nz). All proceeds donated to local charities via Kumeu Rotary.

### **ALBANY ROTARY FUN TEAMS EVENT**

Albany Rotary Club would like to invite all clubs in District 9910 to join them on 9 December 2010 from 6 pm at 575 Albany Highway.

The event format is based around the Top Town format of outdoor fun activities including events such as sheep game, volleyball, steam balloon game, etc.

Cost \$35 per team member with teams of approx 6-10 members. For further details view the event information on etcetera or call Natalie Smith on 09 419 6432 or email [natalies@ihug.co.nz](mailto:natalies@ihug.co.nz)

### **LATEST ROTARY DOWNUNDER ONLINE**

Read the latest Rotary DownUnder online –  
[http://www.rotary.org.nz/documents/inf\\_1364/Aug2010\\_RDU\\_Newsletter.pdf](http://www.rotary.org.nz/documents/inf_1364/Aug2010_RDU_Newsletter.pdf)

### **WHANGAPARAOA ROTARY CHARITY DINNER**

You are invited to join Whangaparaoa Rotary Club for a Gala Charity Dinner on Monday 30 August 2010

at the Silverdale RSA, 43 Vipond Road, Whangaparaoa from 6.30 pm.

Guest speaker Brent (Buck) Anderson, ex All Black and General Manager Provincial Union Rugby plus 4 course dinner by Hibiscus Coast's top chefs.

Dress: lounge suits - Cost \$90 per head (or \$700 table of 8). Proceeds to PolioPlus. Please support this great event and the PolioPlus campaign - for tickets phone Sarah on 428 0204 or email [contact@hibiscuslink.co.nz](mailto:contact@hibiscuslink.co.nz)

If your club puts together a table of 8 the proceeds from your table go to your own club PolioPlus contribution - easy money!! - Limited places - View link on etcetera

### **REMINDER - EMERGENCY RESPONSE KITS**

You can view on etcetera

([http://www.rotary.org.nz/documents/inf\\_1364/ROTARY\\_ERK\\_BROCH\\_2GO\\_V2%20-%20ADD%20LATE%20JULY%202010.pdf](http://www.rotary.org.nz/documents/inf_1364/ROTARY_ERK_BROCH_2GO_V2%20-%20ADD%20LATE%20JULY%202010.pdf))

a copy of the Emergency Response Kit Brochure for circulation to your relevant club members. If each club sponsored just one box per annum, with matching funds from MFAT, Royal New Zealand World Community Service would have at least 500 kits available to respond to the disasters that will undoubtedly hit our Pacific Region again during the next twelve months. Please consider this ...

### **REMINDER - KERIKERI ROTARY GARDEN SAFARI**

- You are invited to join Kerikeri on a Garden Safari from 30-31 October 2010 from 9.30 am to 4.30 pm. Two day tickets only \$20! For details see the brochure on etcetera or to order tickets phone 09 401 6254 or visit [www.gardensafari.co.nz](http://www.gardensafari.co.nz)

**RAFFLE**

Winner: Kent

Statistics: H, T, T

**PARTING THOUGHT**

Bob: There are a lot of things to think about but nothing to worry about

**ROTARY 4 WAY TEST***Of the things we think, say or do:*

1. *Is it the TRUTH?*
2. *Is it FAIR to all concerned?*
3. *Will it build GOODWILL and BETTER FRIENDSHIPS?*
4. *Will it be BENEFICIAL to all concerned?*

**THIS WEEK'S MEETING:**

|                 |  |
|-----------------|--|
| Present:        | Mike A, Jim A, Phyllis A, Bob B, David B, Kent F, Roger F, Derek G, Craiger H, Terry H, Kerry M, Alan P, Heather P, Jack R, John R, Peter S, Domenic W |
| Apologies:      | Jim B, Steve L, Patrick H, Graham N, Monique M   |
| Late Apologies: |  |
| Make Ups:       |  |
| Guests:         | Di Jennings, Frances   |
| Attendance:     | 17/22 77%  |

**SUNSHINE FUND:**

|         |         |
|---------|---------|
| Raffle: | \$41.00 |
| Fines:  | \$43.90 |

**NEXT WEEK'S DUTIES:**

|                 |         |
|-----------------|---------|
| Deputy Sergeant | Heather |
| Squire          | Roger   |
| Squire          | Derek   |
| Greeter         | Kerry   |
| Grace           | Domenic |
| Introduction    | Bob     |
| Thanks          | Terry   |
| Parting Thought | David   |
| Dealer          | Bob     |
| Joker           | Peter   |
| Joker           | Jim     |

**BOARD MEMBERS:**

|                             |                      |
|-----------------------------|----------------------|
| President / International   | Craiger Hargesheimer |
| Vice President / Sergeant   | Derek Gee            |
| Secretary / Bulletin Editor | Heather Pattison     |
| Treasurer                   | Alan Pattison        |
| Community/Youth Director    | Patrick Howard       |
| Vocational Director         | John Riddell         |

**ADDRESS:**

Waitakere City Rotary  
PO Box 104 017  
Lincoln North  
Waitakere, 0654

**INFORMATION**

Kerry McMillan  
Ph 832 3229 or Mobile 021 416 777

**APOLOGIES AND RSVPS TO:**

[apology@details.co.nz](mailto:apology@details.co.nz) or ph 8109 589  
No later than **12 noon** on the **Monday**  
prior to the meeting  
Late Apologies and No shows will, of course, be charged for their meal as it has been booked and paid for!

**WEB SITE ADDRESSES:**

Waitakere City Rotary  
<http://www.rotarywaitakere.org.nz/>  
Rotary International  
<http://www.rotary.org/>  
Rotary NZ  
<http://www.rotary.org.nz>

District Governor's newsletter  
<http://www..rotary.org.nz/newsletter.cfm?District=10>

Rotary Downunder Magazine  
[www.rotarydownunder.com.au](http://www.rotarydownunder.com.au)

Rotary NZ Promotions and Information  
[www.rotary.org.nz/information.cfm?ID=1364](http://www.rotary.org.nz/information.cfm?ID=1364)  
Admin page and information  
<http://www.rotary.org.nz/information.cfm?ID=180>  
Future Vision  
[www.rotary.org/future\\_vision](http://www.rotary.org/future_vision)  
Rotary E Club (for make ups)  
<http://www.rotaryclubone.org/>

Our Past District Governor, Neil Reid, sent us the following flyer re a forthcoming meeting on Monday 13<sup>th</sup> Sept. This is the night we join West Harbour for dinner – but the flyer is included here in case it is of interest to any of our members.

## The Last Great Mayoral Forum

The incumbent mayors standing for the Mayorality of the Auckland Super City will be onstage together to answer all the hard questions



Mayor Willemz



Mayor Banks



Mayor Brown

Bought to you by the Rotary Club of Onehunga- OneTree Hill

At: The Onehunga RSA, 57 Princes Street Onehunga

ON: Monday 13<sup>th</sup> September 7:30pm

This will be two hours of head to head debate  
Let the mayors tell you what they have planned  
for the New Auckland Super City

A small cover charge \$10.00 per head includes a light supper & a donation to the Rotary Foundation Polio eradication programme

For catering purposes RSVP to Ron Clarke Phone 4435013 or e-mail;

[ronald.clarke@paradise.net](mailto:ronald.clarke@paradise.net)



The Rotary Club of Onehunga-One Tree Hill

