



ROTARY CLUB OF WAITAKERE

Making a difference in our world

P O Box 104-017 Lincoln North, Auckland 0654

www.soapboxderby.co.nz

2015 Soapbox Derby Newsletter #3

10th March 2015

Dear School and Sponsors,

Race Day

Race Day is approaching rapidly with our races this Sunday – 15th March 2015 – so herewith details of the day, what to do and when.

Drivers' Registration Forms:

We have received a number of these but a few are still outstanding.

If they have gone missing fresh copies are available on our web site www.soapboxderby.co.nz

NOTE: There are two types of forms – one for the driver, the other for the other team members (pit crew). If one of your drivers is both a Backup driver and Pit Crew – use the driver form and mark it "back up driver".

- Please get them back to me by **Wednesday at the latest**
- Please also send me the **order drivers will race in**

Many schools weigh their entrants and put them in weight order (up or down) to make weight changing between races easier.

Race Draw:

A draft draw with drivers' names will be sent out on Thursday for checking

All paperwork will be printed on Saturday morning (changes after that will **not** be appreciated!)

(NOTE: We have an out of town family wedding on Friday so any questions by Thursday please)

Race Schedule:

A draft schedule showing how the races fit together has been created. A copy will go to the teams once a couple of details have been finalized.

Stickers:

We have a plentiful supply of stickers – but if you need new car numbers we need to get these printed – before Friday!

Food Stalls:

We have six so far – all from Massey High. Is anyone else in need of a food stall as a fund raiser? If so, let me know ASAP.





ROTARY CLUB OF WAITAKERE

Making a difference in our world

P O Box 104-017 Lincoln North, Auckland 0654

www.soapboxderby.co.nz

Food Stall suggestions:

Suggested stalls include, but are not limited to:

American Hotdogs
Baking
Candy floss
Chocolate
Filled pita breads

Filled rolls
Fresh fruit
Fruit smoothies
Kebabs
Lollies

Milk Shakes
Pop-corn
Sausage sizzle
Scones/muffins
....

Derby Day Parking:



The Salvation Army have other plans this weekend so we have arranged alternative parking on private land at the bottom of Westgate Drive.

Please use this. The retail workers usually park on the side roads and on Westgate Drive. With us using the road they are under pressure both for staff and customer parking.

The smaller the impact we make on them and their businesses the better!



Parking map
Please leave it clean and tidy



The grass parking area – as seen at the Henderson Rotary Santa Parade in Dec 2014

Practice:



A reminder to all teams that metal under tension stretches – and both the steering and brake cables are made of metal.

Before sending ANY cars down the track please check and tighten your cables!

Fishing a car out of the storeroom and sending it down the track without checking the cables first is a recipe for disaster.

The cars are generally very safe but if you or your drivers notice steering wobbles – **check the cables.**





ROTARY CLUB OF WAITAKERE

Making a difference in our world

P O Box 104-017 Lincoln North, Auckland 0654

www.soapboxderby.co.nz

Superkids Cars:

Soap Box Derby Fun is this weekend, the 15th March, and we are looking for Superkids.

Super Kids Races is a program for special needs children, who would otherwise be confined to the sidelines as spectators. These races give these precious children the chance to be a soap box derby racer too! In custom built 2 seater cars, and paired with experienced derby racers the kids race down the hill and experience the thrill of the hill and the wind on their face.

If you would like these children to participate in our races please have them turn up on the day and make themselves known.

Race Day Timeline:

Our goal, subject to any delays, is:

7:30am	School teams start arriving
8:00am	Registration desk opens
8:00am	Scrutinizing of cars start
8:30am	Calibrate lanes and double check timing system is working correctly
9:00am	Racing starts
	Lunch Break
	Finalists race
2:30pm approx	Races finish and site clean up
3:00pm approx	Prize Giving

Personal Check List:

To avoid heat stroke, dehydration, exhaustion etc remember the following:

Sun screen Hats Dark glasses Water bottles	Cell phone Camera Walking shoes Money (or packed lunch)	Team gazebo (with sandbags or water containers in place of pegs) Fold up chairs
---	--	--

Safety Note:

Whilst we appreciate that the teams need to be fed – no BBQs in the pit crew area please!





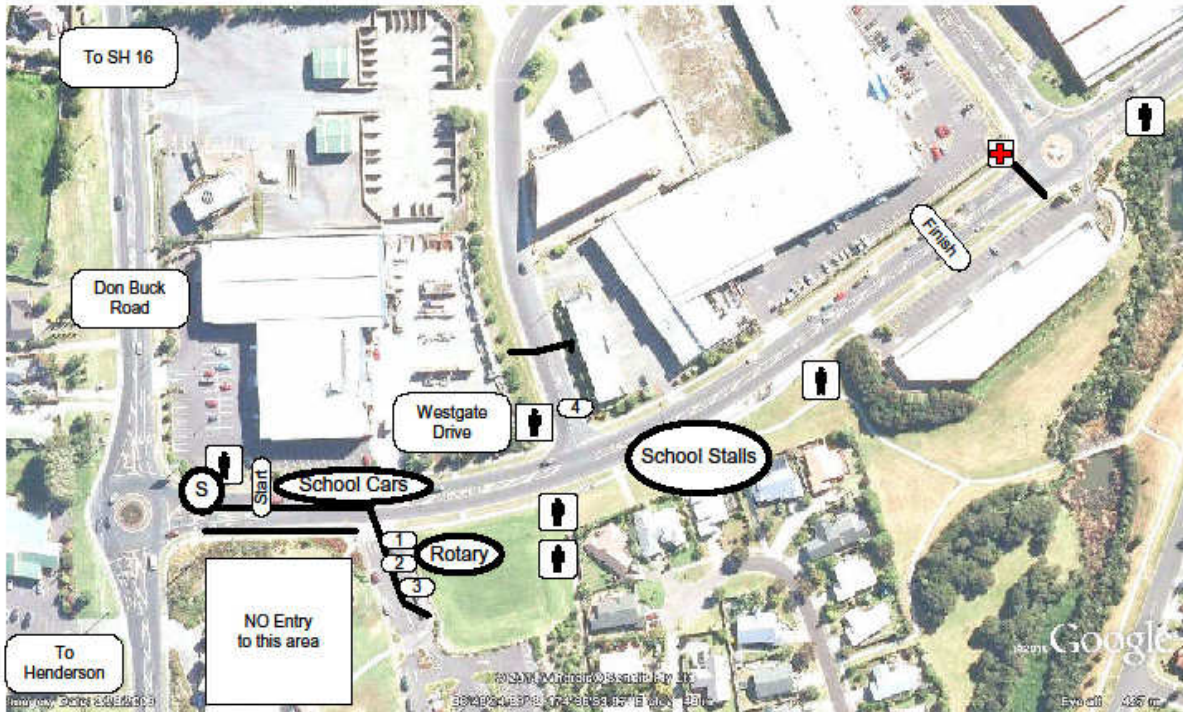
ROTARY CLUB OF WAITAKERE

Making a difference in our world

P O Box 104-017 Lincoln North, Auckland 0654

www.soapboxderby.co.nz

Map:



Site Layout	School Cars = Grass verge and pavement outside Placemakers S = Scruitineering Start = Restricted area School Stalls = on grass area downhill from the Rotary tent	1 = Sound guy 2 = Coffee on the Go 3 = Super soffee ice cream 4 = Go Kart display
	= Ambulance = Toilet	

School Cars

- Waitakere Pit crews go on the grass verge outside Placemakers
- First come, first served – but please, if you are there before the Rotarians are awake (and full of coffee) ensure you leave space at the top for a decent sized scruitineering tent! (Shawn made the first team move last year)

School Food Stalls



The flat grass area will contain the Rotary tent, one or two sponsor tents and events arranged by *in2life Youth Development Trust*.

School stalls will go on the sloping grass verge down the track. Our suggestion is to see what area *in2it* are using and fit around them.

Once again, first in, first served!

The Road Closure team will be at work from 6am with the Rotarians drifting in thereafter – but don't expect too many of us to be wide awake and able to answer intelligent questions at this hour.





ROTARY CLUB OF WAITAKERE

Making a difference in our world

P O Box 104-017 Lincoln North, Auckland 0654

www.soapboxderby.co.nz



In2it Street Games will be running **FREE** activities at the Derby so there will be lots for everyone to do and see.

Bring your friends and families!

WHAT IS IN2IT STREETGAMES?

IN2IT Streetgames is a programme run by the Getin2Life Youth Development Trust.

IN2IT Streetgames provide children and young people across the Auckland region with unstructured play in our public spaces.

We are showing young people that *Any Space is a Play Space!*

WHO IS IN2IT STREETGAMES?

The IN2IT family is made up of different street crew teams that travel to various locations around the Auckland Region.

The Street Crew Teams Bring Equipment and activities appropriate to each of these locations

STREETGAMES SESSIONS EXPLAINED!

Every week our Street Crew Teams will bring different modules to each location, these modules may be Wheels, Balls, Inflatable's or Sticks & Rackets. They are all Unique, FUN and free!

www.in2it.org.nz

Rain Date:

Plan A

The forecast for Sunday varies dramatically between the experts: MetService, Weather Watch, AccuWeather and Ken Ring. Weather Watch is probably the most accurate at present as their forecasters predict 6 days out; the others are still computer models at this stage.

Currently it looks like the typical Auckland weather of the last week – mainly fine with the chance of the odd brief shower, maybe in the evening. But being typical Auckland weather it is likely we won't actually know what is happening till we wake up Sunday morning and look out the window. Or even later standing on the track, scratching our heads and saying, "The forecast was wrong... again!"

If things change dramatically in the next few days we will make the call on Saturday afternoon – and announce it via email and the website - otherwise **we expect to be racing on Sunday 15th**. We can cope with odd shower so long as the road dries out between them.

Plan B

Plan B? There is **always** a Plan B.

Our rain date is Saturday 21st March at Stonefields as a Joint Race with Auckland East.





ROTARY CLUB OF WAITAKERE

Making a difference in our world

P O Box 104-017 Lincoln North, Auckland 0654

www.soapboxderby.co.nz

Website:

www.soapboxderby.co.nz


As information becomes available we add it to our website – including copies of the newsletters. Photos, videos etc from past derbies are also on our site.

Emails:

Please keep an eye on your emails as more information will be coming out soon. If you have other people who would like copies - email Heather with their email address and they will be added to the mail out list.

We have very few parents on the email list (we haven't been given addresses for them) so please ensure they get a copy and know about the website.

The Rotary core team for the event and contact details are:

Kerry McMillan Derby Director clanmcmillan@xtra.co.nz Phone 832-3229 or 021-416-777	Lyn Parts Phone: 021 251 5490 The storeroom is located behind Grasslands at 570 Swanson Road. Ring Lyn first to ensure he is there.
Heather Pattison Project Manager heather@details.co.nz Phone 810-9589 or 0274-719-569	Alan Pattison Technical Assistant alan@details.co.nz Phone 810-9589 or 0274-80-88-30
Rotary Meetings: Wednesday 6pm to 8pm Rex Davy Lounge Waitakere City Rugby & Athletic Club Lower Ground Floor The Trusts Stadium Central Park Drive	Are YOU the missing piece?  Rotary Membership Enquiries Welcome!

Heather Pattison

Please copy this newsletter and distribute to all of the people involved in the event!

